



# Certificate of Analysis

QA SAMPLE - INFORMATIONAL ONLY

1 of 3

ICAL ID: 20190603-058  
Sample: 1906ICA2649.7884  
250 MG FS CBD Recover Terpenes  
Strain: 250 MG FS CBD Recover Terpenes  
Category: Ingestible

Synergy Botanicals  
Lic. # N/A  
None  
San Diego, CA 92121  
Lic. #

Batch#: SB-2019895  
Primary Size:  
Total/Batch Size:  
Collected: 06/12/2019; Received: 06/12/2019  
Completed: 06/12/2019

Moisture <b>NT</b>	$\Delta$ 9-THC <b>2.30 mg/unit</b>	CBD <b>276.07 mg/unit</b>	Total Cannabinoids <b>283.21 mg/unit</b>	Total Terpenes <b>15.51 mg/g</b>
Water Activity <b>NT</b>				

## Summary

SOP Used	Date Tested	Result
Batch		Pass
Cannabinoids	SOP:003Tincture 06/05/2019	Complete
Terpenes	SOP:TERPMS.Tinc 06/05/2019	Complete
Residual Solvents	SOP:NON-Inhalable 06/05/2019	Pass
Microbials	SOP:qpcrone 06/05/2019	Pass
Mycotoxins	SOP: MYCO ED 06/05/2019	Pass
Pesticides	PEST.002 Edible 06/05/2019	Pass
Heavy Metals	SOP:HM001 06/04/2019	Pass



Scan to see results

## Cannabinoid Profile

1 Unit = bottle, 4.763333333 g.

Analyte	LOQ	LOD	%	mg/g	mg/unit	Analyte	LOQ	LOD	%	mg/g	mg/unit
THCa	0.12	0.07	ND	ND	ND	CBDV	0.12	0.07	0.020	0.20	0.96
$\Delta$ 9-THC	0.12	0.07	0.048	0.48	2.30	CBN	0.12	0.07	0.005	0.05	0.22
$\Delta$ 8-THC	0.12	0.07	0.012	0.12	0.56	CBGa	0.12	0.07	ND	ND	ND
THCV	0.12	0.07	ND	ND	ND	CBG	0.12	0.07	0.014	0.14	0.65
CBDa	0.12	0.07	0.019	0.19	0.90	CBC	0.12	0.07	0.033	0.33	1.55
CBD	0.12	0.07	5.796	57.96	276.07	<b>Total</b>			<b>5.946</b>	<b>59.46</b>	<b>283.21</b>

Total THC=THCa \* 0.877 +  $\Delta$ 9-THC; Total CBD = CBDa \* 0.877 + CBD; NR= Not Reported, ND= Not Detected, \*Reported by Dry Mass\*; \*analytical instrumentation used Cannabinoids:UHPLC-DAD, Moisture:Mass by Drying, Water Activity:Water Activity Meter, Foreign Material:Microscope\*

## Terpene Profile

Analyte	LOQ	LOD	%	mg/g	Analyte	LOQ	LOD	%	mg/g
$\beta$ -Caryophyllene	0.20	0.10	0.398	3.98	Caryophyllene Oxide	0.20	0.10	<LOQ	<LOQ
$\beta$ -Myrcene	0.20	0.10	0.343	3.43	cis-Nerolidol	0.20	0.10	ND	ND
Terpinolene	0.20	0.10	0.307	3.07	$\delta$ -3-Carene	0.20	0.10	ND	ND
$\alpha$ -Humulene	0.20	0.10	0.206	2.06	Eucalyptol	0.20	0.10	ND	ND
$\alpha$ -Pinene	0.20	0.10	0.088	0.88	$\gamma$ -Terpinene	0.20	0.10	ND	ND
$\delta$ -Limonene	0.20	0.10	0.070	0.70	Geraniol	0.20	0.10	ND	ND
$\beta$ -Pinene	0.20	0.10	0.061	0.61	Ocimene	0.20	0.10	ND	ND
Linalool	0.20	0.10	0.040	0.40	(-)-Guaiol	0.20	0.10	ND	ND
$\beta$ -Ocimene	0.20	0.10	0.039	0.39	(-)-Isopulegol	0.20	0.10	ND	ND
$\alpha$ -Bisabolol	0.20	0.10	ND	ND	p-Cymene	0.20	0.10	ND	ND
$\alpha$ -Terpinene	0.20	0.10	ND	ND	trans-Nerolidol	0.20	0.10	ND	ND
Camphene	0.20	0.10	ND	ND	<b>Total</b>			<b>1.551</b>	<b>15.51</b>

NR= Not Reported thus no analysis was performed, ND= Not Detected thus the concentration is less then the Limit of Quantification (LOQ), \*analytical instrumentation used:HS-GC-FID-FID\*



Infinite Chemical Analysis Labs  
8380 Miramar Mall #102  
San Diego, CA  
(858) 623-2740  
www.infiniteCAL.com  
Lic# C8-18-0000019-TEMP

*Josh M Swider*

Josh Swider  
Lab Director, Managing Partner  
06/12/2019

Confident Cannabis  
All Rights Reserved  
support@confidentcannabis.com  
(866) 506-5866  
www.confidentcannabis.com



This product has been tested by Infinite Chemical Analysis, LLC using valid testing methodologies and a quality system as required by state law. All LQC samples were performed and met the prescribed acceptance criteria in 16 CCR section 5730, pursuant to 16 CCR section 5726(e)(13). Values reported relate only to the product tested. Infinite Chemical Analysis, LLC makes no claims as to the efficacy, safety or other risks associated with any detected or non-detected levels of any compounds reported herein. This Certificate shall not be reproduced except in full, without the written approval of Infinite Chemical Analysis, LLC.



# Certificate of Analysis

QA SAMPLE - INFORMATIONAL ONLY

2 of 3

ICAL ID: 20190603-058  
Sample: 1906ICA2649.7884  
250 MG FS CBD Recover Terpenes  
Strain: 250 MG FS CBD Recover Terpenes  
Category: Ingestible

Synergy Botanicals  
Lic. # N/A  
None  
San Diego, CA 92121  
Lic. #

Batch#: SB-2019895  
Primary Size:  
Total/Batch Size:  
Collected: 06/12/2019; Received: 06/12/2019  
Completed: 06/12/2019

## Residual Solvent Analysis

Category 1	LOQ	LOD	Limit	Status	Category 2	LOQ	LOD	Limit	Status	Category 2	LOQ	LOD	Limit	Status			
	µg/g	µg/g	µg/g	µg/g		µg/g	µg/g	µg/g	µg/g		µg/g	µg/g	µg/g	µg/g			
1,2-Dichloro-Ethane	ND	1	0.5	1	Pass	Acetone	ND	300	200	5000	Pass	n-Hexane	ND	35	20	290	Pass
Benzene	ND	1	0.5	1	Pass	Acetonitrile	ND	150	100	410	Pass	Isopropanol	ND	300	200	5000	Pass
Chloroform	ND	1	0.5	1	Pass	Butane	ND	300	200	5000	Pass	Methanol	ND	300	200	3000	Pass
Ethylene Oxide	ND	1	0.5	1	Pass	Ethanol	ND	300	200	5000	Pass	Pentane	ND	300	200	5000	Pass
Methylene-Chloride	ND	1	0.5	1	Pass	Ethyl-Acetate	ND	300	200	5000	Pass	Propane	ND	300	200	5000	Pass
Trichloroethene	ND	1	0.5	1	Pass	Ethyl-Ether	ND	300	200	5000	Pass	Toluene	ND	150	100	890	Pass
						Heptane	ND	300	200	5000	Pass	Xylenes	ND	150	100	2170	Pass

NR= Not Reported thus no analysis was performed, ND= Not Detected thus the concentration is less then the Limit of Quantification (LOQ), \*analytical instrumentation used=HS-GC-FID-FID\*

## Heavy Metal Screening

	LOQ	LOD	Limit	Status	
	µg/g	µg/g	µg/g	µg/g	
Arsenic	ND	0.1	0.05	1.5	Pass
Cadmium	ND	0.1	0.05	0.5	Pass
Lead	ND	0.1	0.05	0.5	Pass
Mercury	ND	0.1	0.05	3	Pass

NR= Not Reported thus no analysis was performed, ND= Not Detected thus the concentration is less then the Limit of Quantification (LOQ), \*analytical instrumentation used:ICP-MS\*

## Microbiological Screening

	Result	Status
Aspergillus flavus	Not Detected	Pass
Aspergillus fumigatus	Not Detected	Pass
Aspergillus niger	Not Detected	Pass
Aspergillus terreus	Not Detected	Pass
shiga toxin-producing E. coli	Not Detected	Pass
Salmonella SPP	Not Detected	Pass

ND=Not Detected; \*analytical instrumentation used:qPCR\*



Infinite Chemical Analysis Labs  
8380 Miramar Mall #102  
San Diego, CA  
(858) 623-2740  
www.infiniteCAL.com  
Lic# C8-18-0000019-TEMP

*Josh M Swider*

Josh Swider  
Lab Director, Managing Partner  
06/12/2019

Confident Cannabis  
All Rights Reserved  
support@confidentcannabis.com  
(866) 506-5866  
www.confidentcannabis.com



This product has been tested by Infinite Chemical Analysis, LLC using valid testing methodologies and a quality system as required by state law. All LQC samples were performed and met the prescribed acceptance criteria in 16 CCR section 5730, pursuant to 16 CCR section 5726(e)(13). Values reported relate only to the product tested. Infinite Chemical Analysis, LLC makes no claims as to the efficacy, safety or other risks associated with any detected or non-detected levels of any compounds reported herein. This Certificate shall not be reproduced except in full, without the written approval of Infinite Chemical Analysis, LLC.



# Certificate of Analysis

QA SAMPLE - INFORMATIONAL ONLY

3 of 3

ICAL ID: 20190603-058  
Sample: 1906ICA2649.7884  
250 MG FS CBD Recover Terpenes  
Strain: 250 MG FS CBD Recover Terpenes  
Category: Ingestible

Synergy Botanicals  
Lic. # N/A  
None  
San Diego, CA 92121  
Lic. #

Batch#: SB-2019895  
Primary Size:  
Total/Batch Size:  
Collected: 06/12/2019; Received: 06/12/2019  
Completed: 06/12/2019

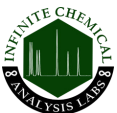
## Chemical Residue Screening

Category 1	LOQ	LOD	Status	Mycotoxins	LOQ	LOD	Limit	Status		
	µg/g	µg/g	µg/g		µg/kg	µg/kg	µg/kg			
Aldicarb	ND	0.05	0.03	Pass	B1	ND	5	3	Tested	
Carbofuran	ND	0.05	0.03	Pass	B2	ND	5	3	Tested	
Chlordane	ND	0.1	0.05	Pass	G1	ND	5	3	Tested	
Chlorfenapyr	ND	0.1	0.05	Pass	G2	ND	5	3	Tested	
Chlorpyrifos	ND	0.05	0.03	Pass	Ochratoxin A	ND	10	7	20	Pass
Coumaphos	ND	0.05	0.03	Pass	Total Aflatoxins	ND		20	20	Pass
Daminozide	ND	0.05	0.03	Pass						
DDVP	ND	0.05	0.03	Pass						
Dimethoate	ND	0.05	0.03	Pass						
Ethoprophos	ND	0.05	0.03	Pass						
Etofenprox	ND	0.05	0.03	Pass						
Fenoxycarb	ND	0.05	0.03	Pass						
Fipronil	ND	0.05	0.03	Pass						
Imazalil	ND	0.05	0.03	Pass						
Methiocarb	ND	0.05	0.03	Pass						
Methyl Parathion	ND	0.1	0.05	Pass						
Mevinphos	ND	0.05	0.03	Pass						
Paclbutrazol	ND	0.05	0.03	Pass						
Propoxur	ND	0.05	0.03	Pass						
Spiroxamine	ND	0.05	0.03	Pass						
Thiacloprid	ND	0.05	0.03	Pass						

Category 2	LOQ	LOD	Limit	Status	Category 2	LOQ	LOD	Limit	Status		
	µg/g	µg/g	µg/g	µg/g		µg/g	µg/g	µg/g	µg/g		
Abamectin	ND	0.05	0.03	0.3	Pass	Kresoxim Methyl	ND	0.05	0.03	1	Pass
Acephate	ND	0.05	0.03	5	Pass	Malathion	ND	0.05	0.03	5	Pass
Acequinocyl	ND	0.05	0.03	4	Pass	Metalaxyl	ND	0.05	0.03	15	Pass
Acetamiprid	ND	0.05	0.03	5	Pass	Methomyl	ND	0.45	0.2	0.1	Pass
Azoxystrobin	ND	0.05	0.03	40	Pass	Myclobutanil	ND	0.05	0.03	9	Pass
Bifenazate	ND	0.05	0.03	5	Pass	Naled	ND	0.1	0.05	0.5	Pass
Bifenthrin	ND	0.25	0.1	0.5	Pass	Oxamyl	ND	0.2	0.1	0.3	Pass
Boscalid	ND	0.05	0.03	10	Pass	Pentachloronitrobenzene	ND	0.1	0.05	0.2	Pass
Captan	ND	0.35	0.2	5	Pass	Permethrin	ND	0.25	0.1	20	Pass
Carbaryl	ND	0.05	0.03	0.5	Pass	Phosmet	ND	0.05	0.03	0.2	Pass
Chlorantraniliprole	ND	0.05	0.03	40	Pass	Piperonyl Butoxide	ND	0.25	0.1	8	Pass
Clofentezine	ND	0.05	0.03	0.5	Pass	Prallethrin	ND	0.05	0.03	0.4	Pass
Cyfluthrin	ND	0.35	0.25	1	Pass	Propiconazole	ND	0.05	0.03	20	Pass
Cypermethrin	ND	0.35	0.2	1	Pass	Pyrethrins	ND	0.25	0.1	1	Pass
Diazinon	ND	0.05	0.03	0.2	Pass	Pyridaben	ND	0.05	0.03	3	Pass
Dimethomorph	ND	0.05	0.03	20	Pass	Spinetoram	ND	0.05	0.03	3	Pass
Etoxazole	ND	0.05	0.03	1.5	Pass	Spinosad	ND	0.05	0.03	3	Pass
Fenhexamid	ND	0.05	0.03	10	Pass	Spiromesifen	ND	0.05	0.03	12	Pass
Fenpyroximate	ND	0.05	0.03	2	Pass	Spirotetramat	ND	0.05	0.03	13	Pass
Flonicamid	ND	0.05	0.03	2	Pass	Tebuconazole	ND	0.05	0.03	2	Pass
Fludioxonil	ND	0.05	0.03	30	Pass	Thiamethoxam	ND	0.25	0.1	4.5	Pass
Hexythiazox	ND	0.05	0.03	2	Pass	Trifloxystrobin	ND	0.05	0.03	30	Pass
Imidacloprid	ND	0.35	0.1	3	Pass						

### Unknown Analyte(s):

NR= Not Reported thus no analysis was performed, ND= Not Detected thus the concentration is less than the Limit of Quantification (LOQ), \*analytical instrumentation used: LC-MSMS & GC-MSMS\*



Infinite Chemical Analysis Labs  
8380 Miramar Mall #102  
San Diego, CA  
(858) 623-2740  
www.infiniteCAL.com  
Lic# C8-18-0000019-TEMP

*Josh M Swider*

Josh Swider  
Lab Director, Managing Partner  
06/12/2019

Confident Cannabis  
All Rights Reserved  
support@confidentcannabis.com  
(866) 506-5866  
www.confidentcannabis.com



This product has been tested by Infinite Chemical Analysis, LLC using valid testing methodologies and a quality system as required by state law. All LQC samples were performed and met the prescribed acceptance criteria in 16 CCR section 5730, pursuant to 16 CCR section 5726(e)(13). Values reported relate only to the product tested. Infinite Chemical Analysis, LLC makes no claims as to the efficacy, safety or other risks associated with any detected or non-detected levels of any compounds reported herein. This Certificate shall not be reproduced except in full, without the written approval of Infinite Chemical Analysis, LLC.